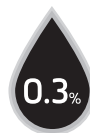


Instructions for Use

Hypromellose 0.3%

Preservative Free Eye Drops



10ml

DESCRIPTION:

AddTear forms a sterile, preservative-free, elastoviscous, clear protective film for the cornea. As a result, AddTear causes long-lasting relief from discomforts associated with:

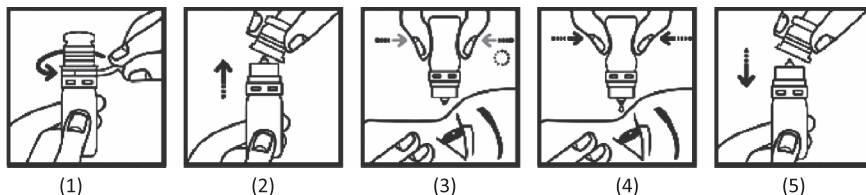
- Mechanical stress, e.g. during wearing of hard or soft contact lenses, or during ophthalmic diagnostic procedures,
- Environmental stress, e.g. induced by air conditioning, wind, coldness, dryness or air polluted by cigarette smoke for example,
- Visual stress from intensive viewing, e.g. at computer terminals, microscopes or during prolonged operation of motor vehicles.

Preservative free AddTear are also well-tolerated during long-term use.

AddTear are suitable for contact lens wearers. The contact lenses do not have to be removed during the application of the AddTear.

APPLICATION

To open the bottle, remove the safety ring by pulling on the designed flap until it is completely removed (1). Then remove the cap by pulling upwards (2). Tilt your head back a little, look upwards and gently pull the lower eyelid away from the eye. Keep the bottle with the opening downwards and instil one drop in the conjunctival sac of the eye 3-5 times daily by firm, prolonged pressure (3 + 4). Close your eyes slowly to allow an even distribution of the liquid on the eye surface. Avoid any contact of the opening with the eye or the hands. A remaining drop on the opening should be removed by light tapping on the bottom of the bottle. Close the bottle now by pressing slightly the cap on the opening (5). If the discomfort gets worse or does not improve, please consult your ophthalmologist!



The special sterile filter system of the dropper causes also a waiting period of a few seconds without pressing the bottle after every abstraction, to enable an air inflow back into the bottle. Without this waiting period an additional abstraction is hindered. Because of the physical reason there is also applied pressing necessary with increasing emptying of the bottle.

COMPOSITION:

1 ml contains: Hypromellose 0.3%, Sodium Chloride, Potassium Chloride, Sodium Tetraborate, Boric Acid, Water for injections.

PACKAGE SIZE: 10 ml.


PRECAUTIONS AND WARNINGS:

- Do not use the product if the safety ring of the cap is broken or the bottle is damaged.
- Do not touch the eye with the dropper.
- Do not use if you are allergic to any of the ingredients.
- In very rare cases the application of the eye drops may cause irritation in very sensitive eyes.
- If you also use other eye drops / eye ointment, wait about 15 minutes. AddTear should always be used last.
- Do not use in infected injured eyes.
- Temporary blurring for a brief period may be experienced after application; avoid driving, operating machinery and wait until normal vision is restored.
- Do not use the eye drops beyond the expiry date which you can find on each multidose container and on the folding box.
- Due to the special innovative sterile filter system of the dropper insert a small quantity always remains in the bottle.
- After first opening use not longer than 3 months.
- Keep out of the reach of children.

STORAGE:

Store at 2°C to 25°C. Do not freeze. Close the bottle after using with the cap . Protect from light by storing the bottle in the folding box.



Lot-number and  expiry date is printed on each label and folding box.



Aseptic manufacturing



For description and mode of application see attached instructions for use.



Storage temperature



Do not use if the safety ring of the cap is broken or the bottle is damaged.

Exclusively distributed by:



TriOn Pharma

TriOn Pharma Ltd-UK

Cowplain PO8 8DL

info@trionpharma.co.uk