

## Instructions for Use

# AddLube

Sodium Chloride 0.9% Unit Dose Eye Drops

**Sterile and Preservative Free**

0.9%  
NaCl  
20 Vials  
X 0.5ml

### DESCRIPTION

AddLube is a sterile, ophthalmological preservative-free saline solution filled into single dose containers.

AddLube moistens the surface of the eye for prolonged relief of discomfort associated with

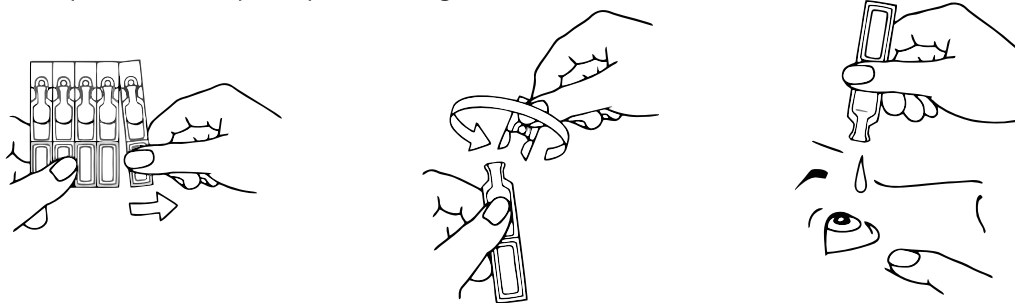
- mechanical stress, e.g. during wearing of hard or soft contact lenses, or during ophthalmic diagnostic procedures
- environmental stress, e.g. induced by air conditioning, wind, coldness, dryness or air polluted by cigarette smoke for example
- visual stress from intensive viewing, e.g. at computer terminals, microscopes or during prolonged operation of motor vehicles.

Preservative free AddLube is also well-tolerated during long-term use.

AddLube is suitable for contact lenses wearers. It can be used for moisturisation while wearing contact lenses. The contact lenses do not have to be removed during the application of the eye drops.

### APPLICATION

Detach one unit dose container. Make sure that each unit dose container is intact. To open the unit dose container, twist off the flat end (do not pull). Tilt your head back a little, look upwards and gently pull the lower eyelid away from the eye and instill one drop in the conjunctival sac of the eye or to inner surface of the contact lens 3 - 5 times daily. Close your eyes slowly to allow an even distribution of the liquid on the eye surface. If the discomfort gets worse or does not improve, please consult your ophthalmologist!



### COMPOSITION

1 ml contains: Sodium Chloride 0.9%, Sodium Dihydrogen Phosphate Dihydrate, Sodium Monohydrogenphosphate Dodecahydrate, Water for injections.

### PACKAGE SIZE

Single dose containers 20 x 0.5 ml


### PRECAUTIONS AND WARNINGS

- Do not use the product if single dose container is damaged.
- Do not touch the eye with the unit dose container.


- Do not allow any contact between the opening of the unit dose container and other surfaces to avoid risk of contamination.
- Do not use if you are allergic to any of the ingredients.
- For single use only; as AddLube does not contain preservatives, any solution not used immediately after opening, should be discarded.
- If you also use other eye drops / eye ointment, wait about 15 minutes. AddLube should always be used last.
- Do not use in infected or injured eyes.
- Temporary blurring for a brief period may be experienced after application; avoid driving, operating machinery and wait until normal vision is restored.
- Do not use the eye drops beyond the expiry date which you can find on each unit dose container and on the folding box.
- AddLube contains phosphate buffer. For the long-term use and functional disorders of the cornea, the use of AddLube may lead to precipitation of calcium salts in the cornea.


### STORAGE

Store at 2° C to 25° C. Do not freeze. Protect from light by storing the single dose containers in the folding box..

**LOT** Lot-number and  Expiry date are embossed on each unit dose container.


**STERILE A** Aseptic manufacturing

 For single use only

 For description and mode of application see attached instructions for use.

 Storage temperature

 0483

 Do not use the product if a single dose container is damaged.

**MD** Medical Device

Exclusively distribution by:

 **TriOn Pharma Ltd-UK**  
Cowplain PO8 8DL, UK  
info@trionpharma.co.uk