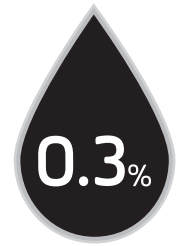


Instructions for Use

AddTear

Hypromellose 0.3% Unit Dose

Sterile, Preservative Free Eye Drops



30 vials x 0.5ml

DESCRIPTION

AddTear forms a sterile, preservative-free, elastoviscous, clear protective film for the cornea. As a result, AddTear causes long-lasting relief from discomforts associated with:

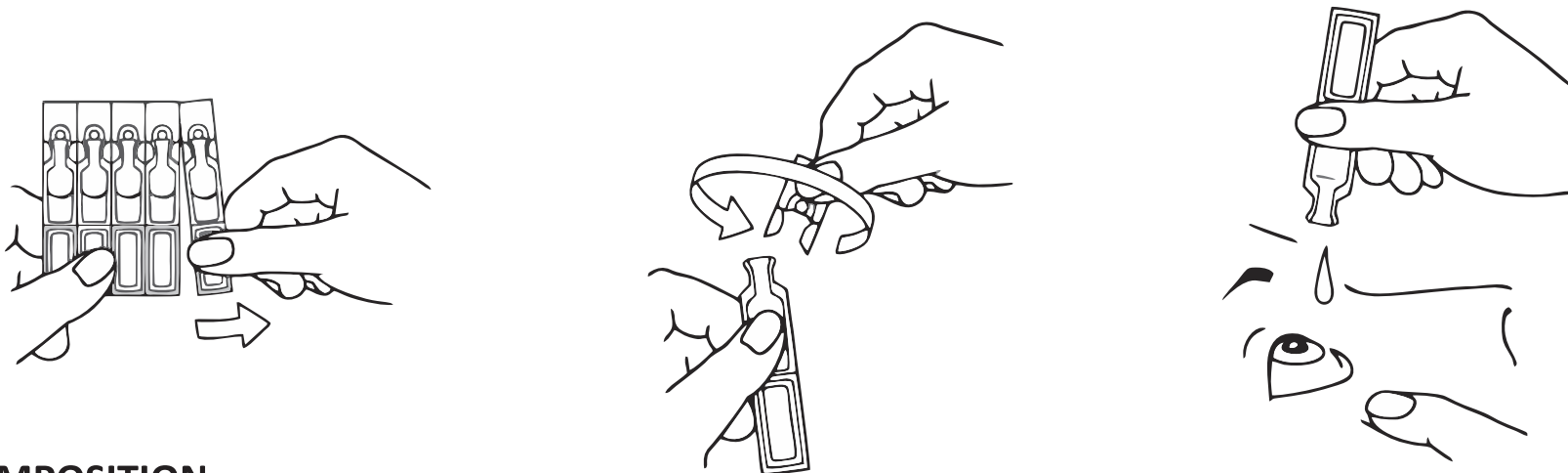
- Mechanical stress, e.g. during wearing of hard or soft contact lenses or during ophthalmic diagnostic procedures,
- Environmental stress, e.g. induced by air conditioning, wind, coldness, dryness or air polluted by cigarette smoke for example,
- Visual stress from intensive viewing, e.g. at computer terminals, microscopes or during prolonged operation of motor vehicles.

Preservative free AddTear are also well-tolerated during long-term use.

AddTear are suitable for contact lens wearers. The contact lenses do not have to be removed during the application of the eye drops.

APPLICATION

Detach one single dose container. Make sure that each single dose container is intact. To open the single dose container, twist off the flat end (do not pull). Tilt your head back a little, look upwards and gently pull the lower eyelid away from the eye and instil one drop in the conjunctival sac of the eye 3 - 5 times daily. Close your eyes slowly to allow an even distribution of the liquid on the eye surface. If the discomfort gets worse or does not improve, please consult your ophthalmologist!



COMPOSITION

1 ml contains: Hypromellose 0.3 %, Sodium chloride, Potassium chloride, Sodium tetraborate, Boric acid, Water for injections.

PACKAGE SIZE

Commercial units: Single dose containers 30 x 0.5 ml

PRECAUTIONS AND WARNINGS

- Do not use the product if a single dose container is damaged.
- Do not touch the eye with the single dose container.
- Do not use if you are allergic to any of the ingredients.
- For single use only; as AddTears does not contain preservatives, any solution not used

immediately after opening, should be discarded.

- used last.
- Do not use in infected or injured eyes.
- Temporary blurring for a brief period may be experienced after application; avoid driving, operating machinery and wait until normal vision is restored.
- Do not use the eye drops beyond the expiry date which you can find on each single dose container and on the folding box.

STORAGE

Store at 2° C to 25° C. Do not freeze. Protect from light by storing the single dose containers in the folding box.



Lot-number and



expiry date are embossed on each unit dose container.



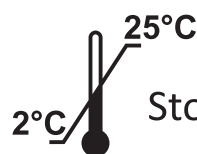
Aseptic manufacturing



For single use only



For description and mode of application see attached instructions for use.



Storage temperature



Do not use the product if a single dose container is damaged.

Exclusively distribution by:



TriOn Pharma Ltd-UK

Cowplain PO8 8DL

info@trionpharma.co.uk